

Plan 3529

32' X 24', 768 sq. ft.
2 Bedrooms, 1 Bath

Exterior Options:

- Porch and railing
- Garden patio door
- Trapezoid windows
- Note – side porch not available



Plan 3530

34' X 26', 884 sq. ft.
2 Bedrooms, 1 Bath

Exterior Options:

- Garden patio doors
- 24" x 24" fixed windows
- Custom second floor windows



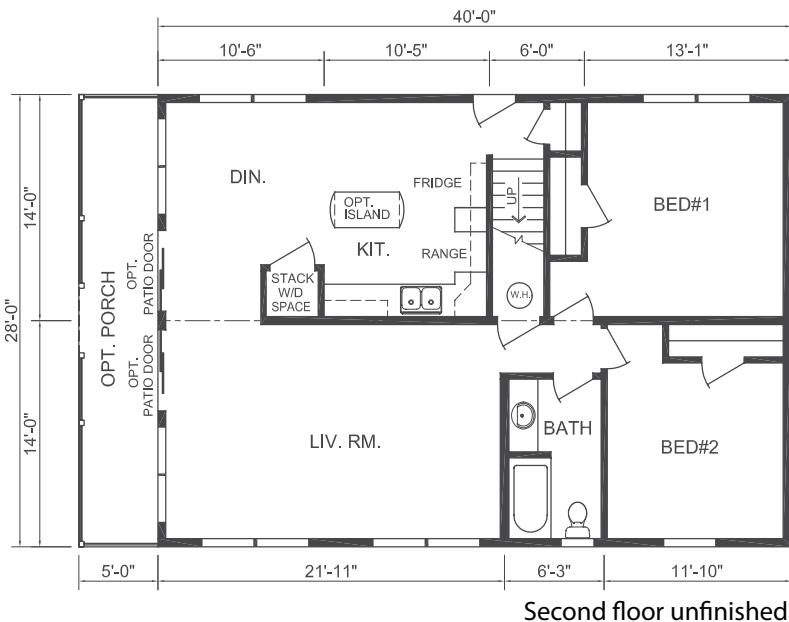
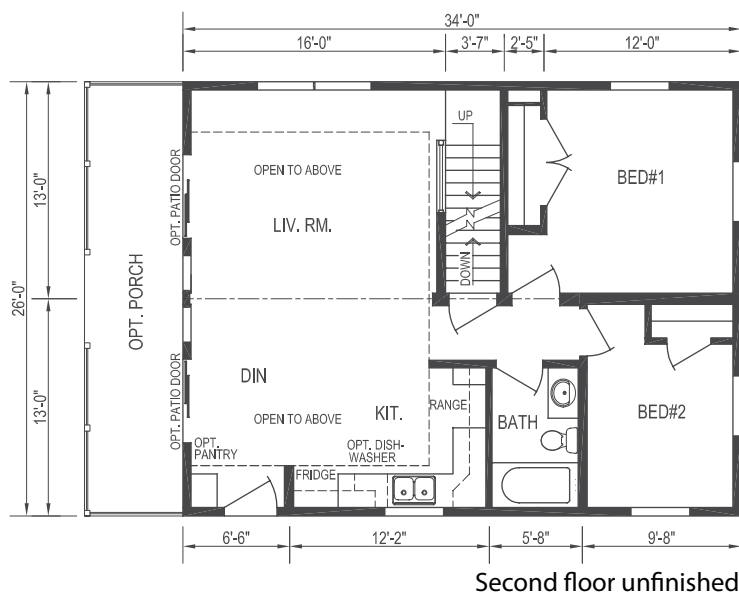
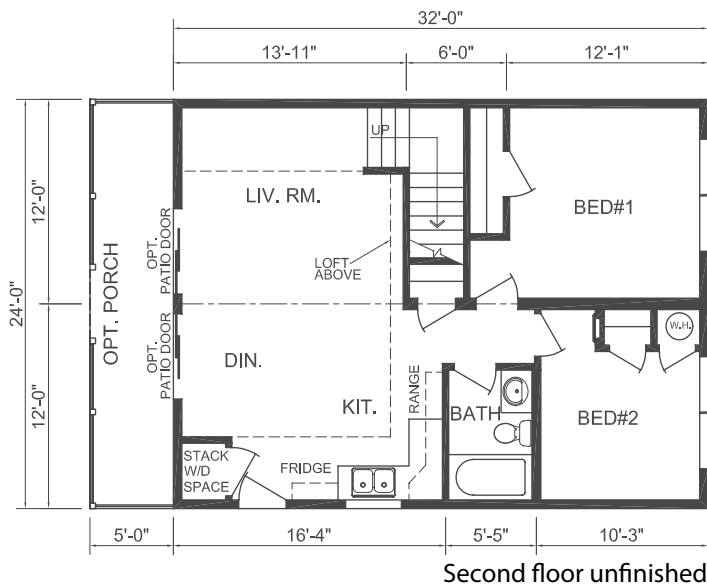
Plan 3531

40' X 28', 1120 sq. ft.
2 Bedrooms, 1 Bath

Exterior Options:

- Garden patio doors (first floor)
- First and second floor porch with railing and roof above
- Sliding patio doors on second floor
- Small dormer over side door

To learn more about this home or to have one custom designed for you contact a Maple Leaf Homes Retailer in your area.
www.mapleleafhomes.ca



Standard Features:

- Limited lifetime warranty on roof shingles
- 30 year warranty on windows
- Limited lifetime warranty on vinyl siding
- High quality designer cabinets
- Kiln dried lumber
- Quality plumbing fixtures
- Plywood floor and wall construction
- Painted wood interior trim (no MDF)
- 10 year structural warranty available
- Energy efficient